

A

B

C

D

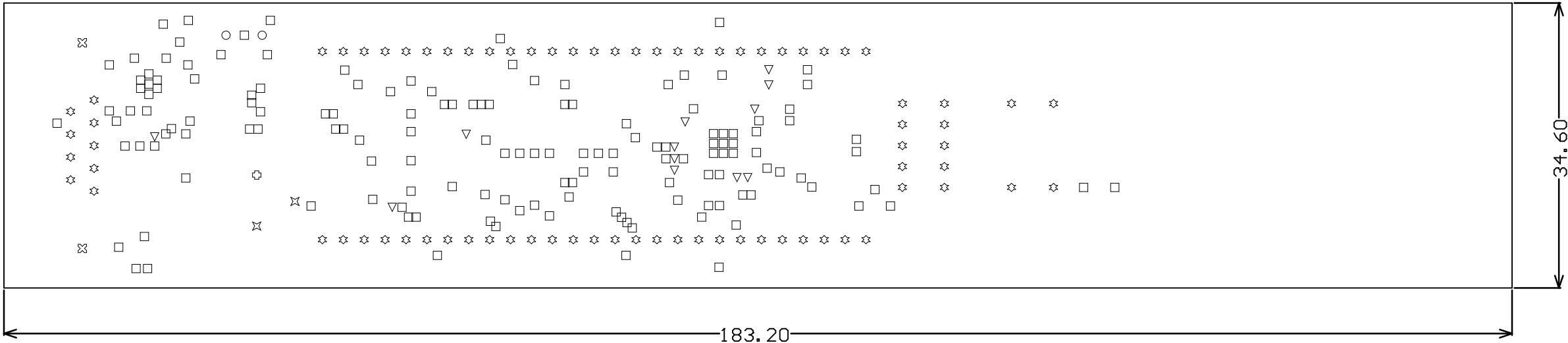
A

B

C

D

- Master Drawings:
- material: FR4, Tg: 150
  - thickness: 1.55mm
  - layer stackup: - Top Cu: 35um
    - Bottom Cu: 35um
  - min. hole metalization: 20um
  - surface finishing: ENIG
  
  - solder mask: - in accordance with IPC-SM-840
    - Liquid Photo Imageable (LPI)
    - color: BLUE
    - unless otherwise defined (in gerber), solder mask overlap on SMT pads is not allowed
  
  - bow and twist: - max. 0.75% SMT boards
    - max. 1.5% THT boards
  - point of origin (0,0): bottom left corner
  - board is designed on 0.050 mm grid
  - primary side: Top layer



Symbol	Hit Count	Tool Size	Physical Length	Rout Path Length	Plated	Hole Type
□	149	0.3mm (11.811mil)			PTH	Round
▽	12	0.5mm (19.685mil)			PTH	Round
*	77	0.9mm (35.433mil)			PTH	Round
○	2	0.9mm (35.433mil)			NPTH	Round
⊗	2	3.1mm (122.047mil)			PTH	Round
⊠	2	1mm (39.37mil)	3.5mm (137.795mil)	2.5mm (98.425mil)	PTH	Slot
⊙	1	1mm (39.37mil)	4mm (157.48mil)	3mm (118.11mil)	PTH	Slot
	245	Total				

Slot definitions : Rout Path Length = Calculated from tool start centre position to tool end centre position.  
Physical Length = Rout Path Length + Tool Size = Slot length as defined in the PCB layout

Title: *Blueboard PNEV512B*

Date: 26.09.2012

Revision: v1.5

File: Blueboard\_PNEV512B\_v1.5.PcbDoc

Designed by: Bostjan Stumpfel/HaIC